

# Accessibility Guide for Peebles Swimming Pool

[www.liveborders.org.uk](http://www.liveborders.org.uk), 01721 720 779

peeblesdutymanager@liveborders.org.uk

Contact for accessibility enquiries: Kate Thomson



## Contents

Welcome .....	3
Facilities at a Glance .....	4
Getting here: .....	4
Arrival at Peebles Swimming Pool .....	6
Accessible changing .....	10
Accessing the pool .....	12
Changing Village .....	13
Emergency Evacuation .....	16

## Welcome

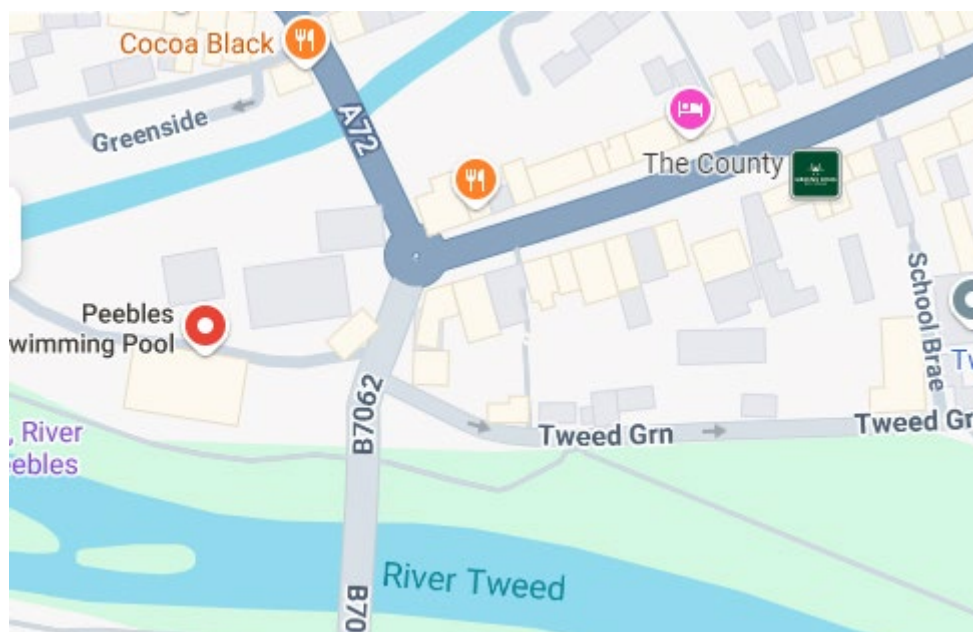
Peebles Swimming Pool is located on Port Brae, a short sloping road from the road leading from just beyond the end of the high street towards the road bridge over the river Tweed. There is paid car parking adjacent to the pool. Refundable on presentation of the voucher to staff on site.

Peebles is a town 23 miles south of Edinburgh. The river Tweed flows through the town and can be crossed by both road and pedestrian bridges. The pool affords lovely views of the river.

We are fully accessible for wheelchair users and can cater for anyone with other specific access requirements. The main entrance and reception area has small tables and chairs within it, these might need to be moved to facilitate wheelchair access.

Please get in touch if you require any further information about specific access or would like advice on planning your visit.

We have a small café area (vending only) and welcome children. Peebles Swimming pool has a small shallow pool separate to the main pool, which is open during public session times, please check the website.



## Facilities at a Glance



### Access

There is level access from the level main entrance to all areas. Doors at the main entrance are push button operated for automated opening.



### General Information

We provide a complimentary ticket for carers / personal assistants.

## Getting here:

Peebles Swimming Pool  
Port Brae  
PEEBLES  
EH45 8AW

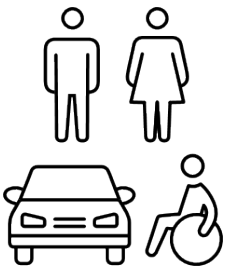


### Travel by Public Transport

- You can get to the Peebles by bus. The X62 runs from Galashiels to Edinburgh, passing through Peebles. The bus stop in Peebles is outside the Post office, which is 400m from the Peebles Swimming Pool.
- The nearest train station is Edinburgh to the North and Galashiels to the South. Onward journey to Peebles by the X62 bus.

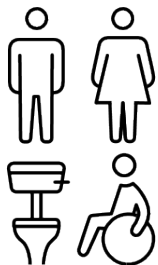
### Travel by Taxi

- Accessible taxis should be booked in advance. Drop offs can be made close to the front door. There is no kerb to negotiate.



## **Parking**

- There is one disabled parking space immediately outside the front door, which is completely level. There are further disabled spaces in the carpark to the rear of the building.
- There is a car park adjacent to the building. Please note this is Pay & Display.
- There are four bike racks located to the left of the main entrance to Peebles swimming pool.
- Car park lighting will illuminate the approach to the swimming pool at the appropriate time of day.



## **Accessible Toilets and Changing**

- We have visitor toilets including one unisex accessible changing room with toilet, with shower, grab rails, pull cord alarm. The accessible changing gives access direct to poolside. A further disabled toilet has baby change facilities.



## Arrival at Peebles Swimming Pool

### Route to Main Entrance

- The surface from the parking to the venue tarmac with a paved footpath running along the side of the building under the overhang giving access to the main door.
- The route from the bus stop outside the Post office is level along the High Street. There is a downhill slope down Port Brae, the swimming pool is located on level ground at the bottom of the slope. The car park adjacent to the building provides level access, with no gradient.

### Main Entrance

- The main entrance is level.
- The main door is opens outward and is automatic. There are two push button operated doors to access the reception and café area.
- The floor is level and covered with laminate, there are tiles in the changing areas. The entrance foyer is floored with matting.



View of push button main door and the covered approach route

## Getting around Inside

- The café area affords views of both the main and the small pool.
- The floors are various hard surfaces.
- Lighting levels are good and can be adjusted to meet visitor's needs.

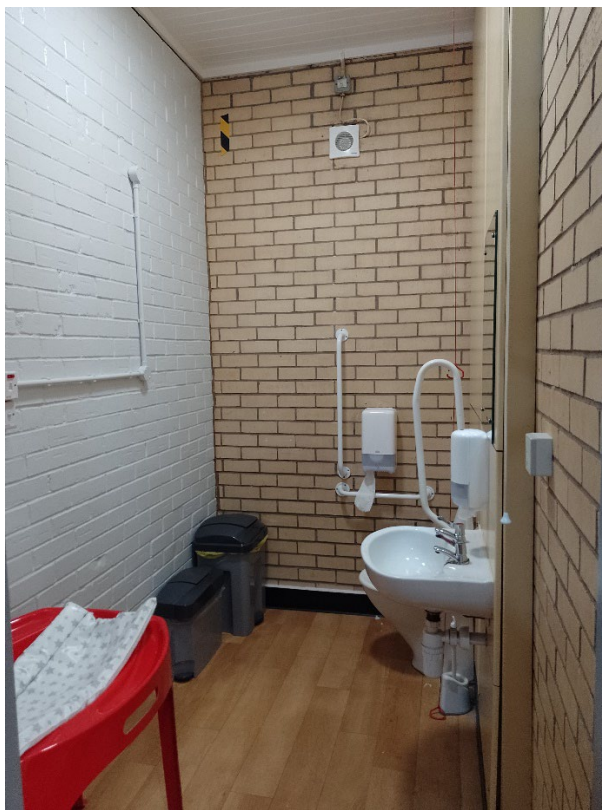
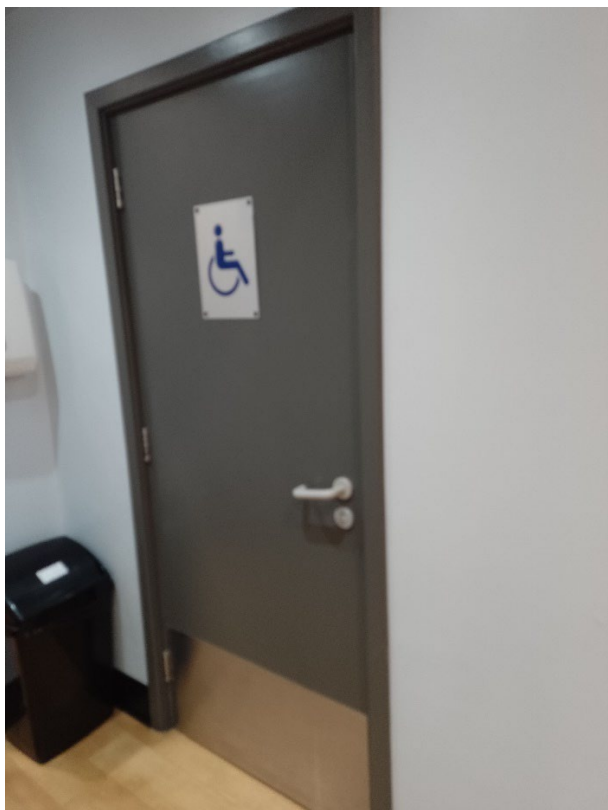


Main reception and café area gives access to the disabled changing room, there is a further disabled toilet with baby changing facilities also accessed from the main reception area. The wall mounted kiosk has a screen, this is for self serve check in, members swipe their cards here.



There is a vending machine for purchasing snacks and drinks.





Disabled toilet and baby change room, accessed from the main reception area.



The pool hall has large windows at either end, these may be covered with blinds when it is sunny.

## Accessible changing

We have a fully equipped accessible changing room offering direct access to the poolside.



Toilet with grab rails, low level basin, adequate floor space for manoeuvring. This is in the disabled changing and gives direct access to poolside.



Fold down seat and shower in the disabled changing room.



## Accessing the pool

The pool hall can be accessed directly from the disabled changing room.

The pool can be accessed via gradual steps with a double handrail. We also have fully equipped poolside hoist for those with less mobility. The hoist has a detachable wheeled chair.



The steps which afford easy access are not in the pool all of the time, if you will require the steps please ask at reception before getting changed, the steps are heavy and require two people to lift them into place.

## Changing Village

The changing village is unisex with separate male and female toilets. Cubicles are red.



Changing cubicles





Lockers and hand basins in the changing village



Separate male and female toilets, accessed from the changing village.

Showers are located on the poolside



Peebles has a small, shallow pool which is accessed by gentle steps



## Emergency Evacuation

- We have emergency evacuation procedures for disabled visitors.
- In the case of an emergency, all customers inside the Peebles swimming pool will be led to safety by a member of the team or by a member of the fire brigade.
- There are fire exit doors giving egress from the pool hall to the car park and assembly point at the rear of the building.



Disabled parking bay – two spaces.





Bike racks